

# Wintering closer to breeding grounds comes at a cost in an Arctic-specialized songbird, *Plectrophenax nivalis* (Snow Bunting)

Marianne Turcotte<sup>1,2,\*</sup>, Audrey Le Pogam<sup>1,2</sup>, Oliver P. Love<sup>3</sup> and François Vézina<sup>1,2</sup>

<sup>1</sup>Département de Biologie, Chimie et Géographie, Université du Québec à Rimouski, Rimouski, Québec, Canada

<sup>2</sup>Groupe de Recherche sur les Environnements Nordiques BORÉAS, Centre d'Études Nordiques, Centre de la Science de la Biodiversité du Québec, Université du Québec à Rimouski, Rimouski, Québec, Canada

<sup>3</sup>Department of Integrative Biology, University of Windsor, Windsor, Ontario, Canada

\*Corresponding author: [marianne.turcotte14@gmail.com](mailto:marianne.turcotte14@gmail.com)

## ABSTRACT

Wintering at high latitudes may offer Arctic-breeding migratory birds advantages such as shorter migration distances and earlier arrival at breeding sites, potentially improving reproductive success. However, wintering at northern sites may also come at a cost as birds can experience colder and harsher conditions than individuals wintering farther south, consequently requiring physiological adjustments for life in the cold. We compared the physiological costs of wintering at different latitudes in *Plectrophenax nivalis* (Snow Bunting) from an Eastern Canadian population during the peak of winter. We hypothesized that individuals wintering at higher (i.e., colder) latitudes would be structurally larger, have better thermal insulation, maintain thicker pectoralis muscles and more lean tissues, carry larger lipid reserves, and experience greater physiological maintenance costs compared to individuals wintering at lower (i.e., warmer) latitudes. Contrary to our expectation, structural size did not differ between wintering sites. However, northern birds were 8% heavier and carried 32% more lipid reserves, suggesting increased energy storage for cold endurance. These birds also had 4% more lean mass and maintained slightly thicker pectoralis muscles, consistent with greater shivering thermogenesis capacity. Notably, basal metabolic rate (BMR), corrected for lean mass, was 6% higher in northern birds, indicating elevated physiological maintenance costs in colder environments. These findings therefore show that *P. nivalis* must pay a significant and measurable cost when wintering in colder environments to benefit from the potential fitness advantage of a shorter migration distance to their Arctic breeding grounds. Our study illustrates the physiological trade-off migratory birds face when selecting wintering locations and underscores the importance of considering both ecological benefits and metabolic costs when studying avian life-history strategies under variable climatic conditions.

**Keywords:** Arctic passerines, body composition, cold wintering site, differential migration, latitude, physiological costs

## How to Cite

Turcotte, M., A. Le Pogam, O. P. Love, and F. Vézina (2025). Wintering closer to breeding grounds comes at a cost in an Arctic-specialized songbird, *Plectrophenax nivalis* (Snow Bunting). *Ornithology* 143:ukaf038.

## LAY SUMMARY

- *Plectrophenax nivalis* (Snow Bunting) wintering in Eastern Canada are distributed along a southwest-to-northeast axis, with individuals occupying northeastern sites experiencing colder environments than those wintering in milder southwestern sites.
- Investigating physiological costs associated with winter distribution can help understand wintering site selection and its impact on other life-history stages such as breeding.
- We caught *P. nivalis* during winter at different latitudes (northern and southern sites) and compared physiological traits such as body mass, body composition, flight muscles size, and metabolic rates.
- Birds wintering at higher latitudes were heavier, carried more lipids and lean tissues, had larger flight muscles and higher physiological maintenance costs measured as metabolic rates.
- Results suggest that, while northern wintering *P. nivalis* might benefit from shorter migration distance to their breeding grounds in the spring, they nevertheless pay a measurable physiological cost to live in a harsher environment during the cold season.

## "Passer l'hiver plus près des sites de reproduction a un coût chez un passereau spécialisé de l'Arctique, *Plectrophenax nivalis* (Plectrophane des neiges)."

### RÉSUMÉ

Hiverner à des latitudes élevées peut offrir aux oiseaux migrateurs arctiques certains avantages, comme une distance de migration plus courte et une arrivée plus précoce sur les sites de reproduction, ce qui pourrait améliorer leur succès reproducteur. Toutefois, hiverner plus au nord expose également ces oiseaux à des conditions climatiques plus froides et rigoureuses, nécessitant des ajustements physiologiques. Nous avons comparé les coûts physiologiques de l'hivernage à différentes latitudes chez *Plectrophenax nivalis* (Plectrophane des neiges), issu d'une population de l'est du Canada, durant le cœur de l'hiver. Nous avons émis l'hypothèse que les individus hivernant à des latitudes plus élevées (et donc plus froides) seraient de plus grande taille, mieux isolés thermiquement, avec des muscles pectoraux plus développés, davantage de tissus maigres, des réserves lipidiques plus importantes et des coûts physiologiques de maintenance plus élevés que ceux hivernant plus au sud. Contrairement à nos attentes, la taille corporelle ne variait pas selon le site d'hivernage. Ces résultats montrent que *P. nivalis* supporte un coût physiologique mesurable lorsqu'il hiverne dans des environnements plus froids, en échange du potentiel avantage d'une migration plus courte vers les sites de reproduction arctiques. Notre étude met en évidence le compromis physiologique auquel font face les oiseaux migrateurs dans la sélection de leurs sites d'hivernage et souligne l'importance de considérer à la fois les bénéfices écologiques et les coûts métaboliques dans l'étude des stratégies d'histoire de vie aviaire en contexte climatique variable.

**Mots-clés:** Composition corporelle, coûts physiologiques, latitude, migration différentielle, passereaux arctiques, site d'hivernage froid

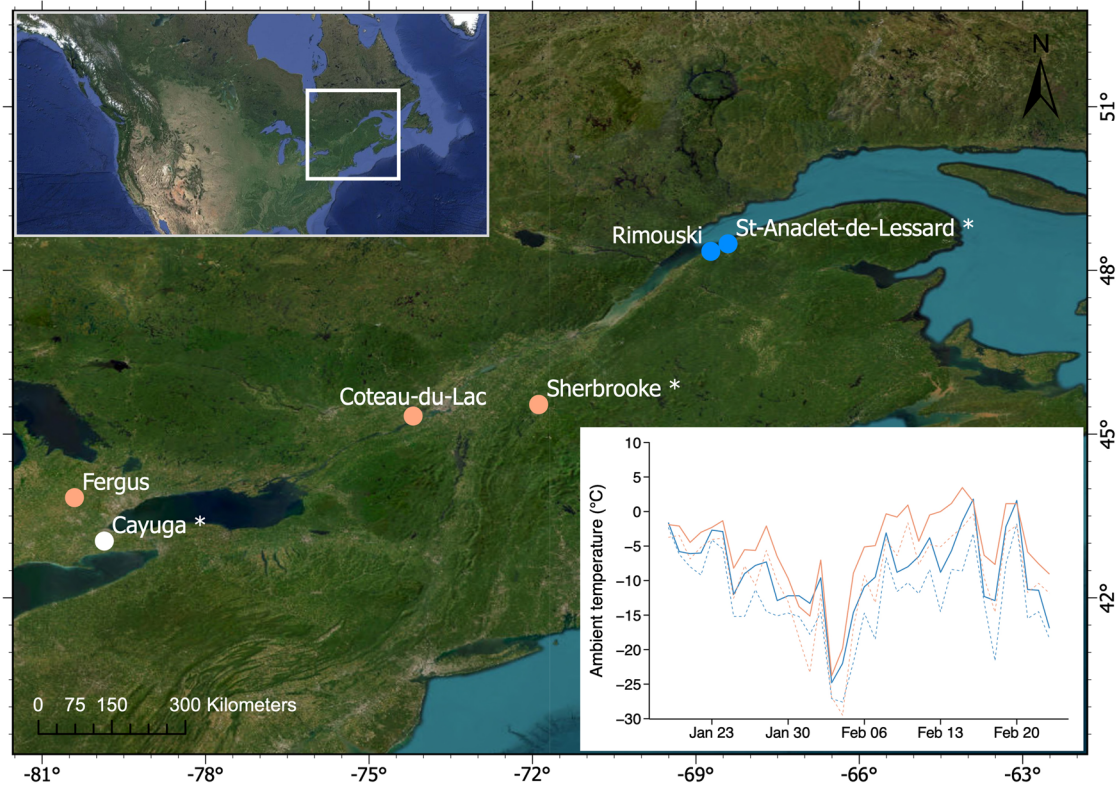
### INTRODUCTION

Migration is described as a seasonal movement of populations between regions where conditions alternate between favorable and unfavorable (Dingle and Drake 2007). Within these movements, differential migration refers to situations where distinct classes of individuals (age, sex, or subspecies) differ in one or more aspects of their migration, either distance, timing or both (Terrill and Able 1988, Cristol et al. 1999). Many hypotheses are still considered to explain differential migration (Paprocki and Conway 2024). In northern passerines, the typical pattern is heavier individuals (often males) wintering further north than lighter individuals (often females; *Junco hyemalis* [Dark-eyed Junco], Ketterson and Nolan 1976; *Zonotrichia leucophrys* [White-crowned Sparrow], Morton 1984; *Plectrophenax nivalis* [Snow Bunting], Macdonald et al. 2016). This geographical segregation thus results in different spring migration distances, with birds wintering at lower latitudes having longer distances to travel to reach their breeding grounds. Although wintering at northern sites is often associated with advantages such as early arrival on the breeding grounds (e.g., Rotics et al. 2018) that may help secure the best territories and lead to higher reproductive success (Møller 1994), this strategy may come with significant wintering costs.

In north temperate areas, wintering at high latitudes involves constraints associated with cold temperatures (Scholander et al. 1950, Cooper and Swanson 1994, Liknes and Swanson 1996), low food abundance (King 1972, McNamara et al. 1990, Swanson 2010, Carey 2012) and shorter days for diurnal species, which reduces feeding duration and increases fasting times. Life in the cold also typically translates into high feeding rates when food is available, to keep up with energetic demands (McWilliams et al. 1999, Williams and Tieleman 2000, Vézina et al. 2006a), as well as high rates of lipid accumulation to compensate for unpredictable access to food (Blem 1973, Gosler 2002, Laplante et al. 2019). As a result, individuals facing cold wintering conditions often have large energy-processing organs (Williams and Tieleman 2000, Petit et al. 2014, Wu et al. 2014) and pectoralis muscles, which are used in shivering thermogenesis (Cooper 2002, Liknes and Swanson 2011, Swanson and Merkord 2013). However, these changes often lead to elevated

physiological maintenance costs (Wiersma and Piersma 1994, Piersma et al. 1996, Williams and Tieleman 2000, Cooper 2002), measured as basal metabolic rate (BMR, Swanson 2010). Thermal constraints and the resulting physiological responses can also vary among individuals differing in body size (Dawson et al. 1983, Marsh and Dawson 1989). In other words, the constraints and responses might be tempered to a certain degree in larger individuals, whose lower surface area to volume ratio may offer the benefit of lower relative heat loss compared to birds of smaller body size (Baldwin et al. 2023). Cold conditions can also translate into increased insulative properties of plumage (Saarela et al. 1989, Swanson 1991, Cooper 2002), potentially allowing best-insulated individuals to winter higher north in colder environments (Blem 1981; but see Stager et al. 2020). Plumage insulation is routinely measured as thermal conductance, which is the body heat transferred from an animal to its environment (McNab 1980, Hill et al. 2016).

As far as we know, the physiological consequences of differential migration have received little empirical attention in northern wintering passerines, especially over an array of physiological parameters (but see Nolan and Ketterson 1983). A good model species to study the relative physiological costs of differential migration at northern latitudes is *P. nivalis*. In North America, this Arctic-breeding passerine winters in cold, snowy, temperate regions (Rae and Marquiss 1989, Banks et al. 1991). This requires physiological adjustments for thermoregulation (Le Pogam et al. 2020) as well as lipid storage to support local variation in energy demands (Laplante et al. 2019). The Eastern North American population shows a southwest to northeast winter distribution (see Figure 1 in Macdonald et al. 2012). Along this axis, we observe a typical differential migration where most smaller females, and some small males, are found in the southwestern portion of the species' wintering range, whereas most larger males, and some large females, are found at higher eastern latitudes (Macdonald et al. 2016). Using banding recovery data, Macdonald et al. (2012) studied migratory connectivity of *P. nivalis* from Eastern Canada and showed that those birds breed in Greenland. Individuals wintering at northeastern sites are thus closer to their breeding



**FIGURE 1.** Geospatial extent of study area with capture locations of wintering *Plectrophenax nivalis* (Snow Bunting). Locations where a temporary laboratory was set up are designated with an asterisk (\*). Capture locations are represented with colored circles (white = not used in statistical analyses, orange = southern sites, blue = northern sites). Mean daily (solid line) and mean minimum (dashed line) ambient temperatures during the sampling period (January 19 to February 23, 2023) for combined southern sites (Fergus, Coteau-du-Lac, and Sherbrooke; orange line) and Rimouski (blue line) are shown to highlight the temperature differences across the study area. No snow cover data was available for this study.

grounds and are thought to have shorter migration distances to travel in the spring (Macdonald et al. 2012). Males also arrive earlier than females on their breeding grounds (Guindre-Parker et al. 2013, Mckinnon et al. 2016), allowing them to quickly secure high-quality breeding territories (Guindre-Parker et al. 2013, Macdonald et al. 2016), which likely increases their reproductive success (Meltofte 1983, Guindre-Parker et al. 2013).

In this study, we examined the potential physiological costs of *P. nivalis* wintering in colder and harsher northern environments relative to presumably less physiologically costly southern areas. In addition to structural size and body mass, we documented the lean and lipid components of body mass, pectoralis muscle thickness and body insulation in addition to quantifying physiological maintenance costs (i.e., basal metabolic rate). We expected birds wintering at higher latitudes to be structurally larger (Ashton 2002, Olson et al. 2009, Macdonald et al. 2016) and heavier (Nolan and Ketterson 1983, Olson et al. 2009), to have larger pectoralis muscles (Cooper 2002, Liknes and Swanson 2011) and more lean tissues on average (Zheng et al. 2008, Petit et al. 2014), which should be associated with higher maintenance costs (Kendeigh and Blem 1974, Swanson 1990, Petit et al. 2014, Broggi et al. 2019) than individuals spending the winter at sites farther south. We also expected these birds to carry larger lipid stores (Blem 1976, Cooper 2007, Le Pogam et al. 2020). Finally, we predicted that individuals wintering at northern sites would also be those benefiting from greater plumage insulation relative to individuals experiencing milder southern conditions (Saarela et al. 1989, Swanson 1991, Cooper 2002).

## METHODS

### Study Sites

*Plectrophenax nivalis* in Quebec (QC) and Ontario (ON) are distributed along a southwest-to-northeast axis from the Great Lakes to the Gulf of St Lawrence (Macdonald et al. 2012, Montgomerie and Lyon 2020). Therefore, birds farthest to the northeast experience the most challenging wintering conditions, while those to the southwest are exposed to milder conditions (Figure 1; Laplante et al. 2019). We captured and measured birds at 6 different locations in Eastern Canada from January 19, 2023, to February 23, 2023: St-Anaclet-de-Lessard (QC), Rimouski (QC), Sherbrooke (QC), Coteau-du-Lac (QC), Cayuga (ON) and Fergus (ON) (Figure 1). We selected these locations to represent the thermal conditions in the wintering range of the Eastern Canadian *P. nivalis* population. We set up field laboratories at the extremes and mid-range locations across the wintering range (see Figure 1). For statistical reasons the northernmost locations (Rimouski and St-Anaclet-de-Lessard) were grouped as the “northern” sites and the remaining sites (Fergus, Coteau-du-Lac and Sherbrooke) as the “southern” sites (see the statistical analysis section).

### Capture and Measurements Protocols

We captured birds at each site (Cayuga,  $n=8$ ; Fergus,  $n=12$ ; Coteau-du-Lac,  $n=6$ ; Sherbrooke,  $n=7$ ; Rimouski,  $n=17$ ; St-Anaclet-de-Lessard,  $n=73$ ) with walk-in or whoosh-net traps baited with commercially available crushed corn. Immediately after capture, we weighed ( $\pm 0.01$  g; i.e., body mass at

capture) the birds and aged and sexed them according to Pyle (1997). We then banded individuals with a USGS-numbered metal band and took morphometric measurements (lengths of wing, tail, tarsus and head + beak). We then transported the birds in individual fabric bags to an indoor temporary laboratory where they could undergo further measurement and be kept in cages (117 cm wide × 31 cm deep × 39 cm high) with access to food (crushed corn, wheat, sorghum, white and red millet, black oil sunflower; Armstrong, Hagersville, ON) and water ad libitum until further measurements.

### Body Composition

Once in the laboratory, we re-weighed ( $\pm 0.01$  g) the birds before measurements and estimated the lipid and lean components of their body mass (southern sites,  $n=24$ ; northern sites,  $n=90$ ) to the nearest  $\pm 0.01$  g using non-invasive quantitative magnetic resonance (QMR; EchoMRI, Houston, TX; Guglielmo *et al.* 2011). For each bird, 3–4 measurements were taken ( $<12$  minimum total per bird) and we used average values for statistical analyses. Repeatability of measurements was  $r^2 = 0.99$  for lipid mass and  $r^2 = 0.98$  for lean mass. We also estimated pectoralis muscle thickness (southern sites,  $n=24$ ; northern sites,  $n=82$ ) noninvasively (Dietz *et al.* 2007, Swanson and Merkord 2013, Le Pogam *et al.* 2020) using a LOGIQe ultrasound scanner fitted with a linear probe (12 MHz; GE Healthcare, Wauwatosa, WI). To avoid soaking the feathers with ultrasound transmission gel, we enclosed the gel (Parker Aquasonic 100) and ultrasound probe in a latex condom. We wetted the feathers of the pectoralis muscle region with water to clear the area before scanning. The probe was then placed on the bird's left pectoralis at a  $90^\circ$  angle to the keel, 1–2 mm from the upper keel tip. This resulted in a cross-sectional image of the muscle, where we could measure muscle thickness using a  $45^\circ$  angle relative to the keel. To control for potential variation due to probe position on the muscles, we also measured keel height and included it as a covariate in statistical models (Le Pogam *et al.* 2020). We conducted 3–4 measurements on each bird and averaged them for analyses. Repeatability of measurements was  $r^2 = 0.64$  for pectoralis and  $r^2 = 0.66$  for keel. All measurements were conducted by a single person (M.T.) to avoid interobserver error (Royer-Boutin *et al.* 2015). We then either released the birds or put them back in a cage with food and water ad libitum until metabolic measurements.

### Metabolic Parameters

We used respirometry to measure thermal conductance (McNab 1980; southern sites,  $n=22$ ; northern sites,  $n=28$ ) and physiological maintenance costs via measurements of basal metabolic rate (McNab 1997, Swanson *et al.* 2017b; southern sites,  $n=21$ ; northern sites,  $n=32$ ). We measured conductance first during the day (mean fasting time before measurements  $2.79 \pm 0.34$  hr). Measurement lasted 3 hr, including 2 hr for habituation to metabolic chambers, which were not considered in metabolic calculations. Birds were then kept in cages with food and water ad libitum until BMR trials overnight, which began between 18:00 and 23:00 (average:  $20:20 \pm 1.19$  hr) and ended between 7:00 and 9:00 (average:  $7:59 \pm 0.59$  hr) the next morning.

To measure conductance, we put birds into individual metabolic chambers (airtight 1.5 L stainless-steel containers) and exposed them to dry  $\text{CO}_2$ -free air (scrubbed with Soda lime,

Molecular Products, Louisville, CO, USA, and Drierite, 8 mesh, Hammond Drierite, Xenia, OH, USA) at a constant flow rate of  $700 \text{ mL min}^{-1}$  controlled by mass flow controllers (Omega FMA5418A, previously calibrated with a Bubble-O-Meter, Dublin, OH, USA). The air coming out of a chamber was also scrubbed of water and  $\text{CO}_2$  before entering one of two FoxBox oxygen analyzers (Sable Systems, Las Vegas, NV, USA). Conductance was thus measured on a maximum of 2 birds simultaneously and metabolic chambers were kept in a temperature-controlled freezer (mean temperature in chambers ( $T_{\text{chamber}}$ ):  $-19.15 \pm 1.05^\circ\text{C}$ ) for the duration of these measurements. During conductance measurements, the analyzers received scrubbed ambient “baseline” air for 10 min before and after chamber measurements which lasted 160 min, for a total of 180 min, switching between air streams using a MUX multiplexer (Sable Systems, Las Vegas, NV, USA). We recorded fractional oxygen concentration ( $\text{VO}_2$ ) and temperature in the metabolic chambers with a sampling interval of 5 s. We measured body temperature ( $T_{\text{body}}$ ) immediately before measurements (mean  $T_{\text{body}}$ :  $41.42 \pm 0.86^\circ\text{C}$ ) with a thermocouple reader (TC-2000, Sable Systems, Las Vegas, NV, USA) using a copper constantan thermocouple inserted  $\sim 10$  mm into the cloaca and after trials as soon as the birds were taken out of their chambers (mean  $T_{\text{body}}$ :  $38.33 \pm 1.20^\circ\text{C}$ ).

A similar protocol was used for BMR measurements. The duration of trials ( $11.67 \pm 0.18$  hr) ensured a post-absorptive state for all birds (mean fasting time until reaching BMR state:  $5.66 \pm 2.47$  hr). We measured the oxygen consumption of up to four birds at a time using two chambers per analyzer. Each analyzer received airstream from a chamber for 40 min between baselines, which lasted 10 min each, then the same sequence was repeated for the other 2 chambers. When analyzers were only monitoring one chamber each, they received airstream from the chambers for 60 min instead of 40 min. Birds received a constant flow ( $650 \text{ mL min}^{-1}$ ) of dry  $\text{CO}_2$ -free air and metabolic chambers were kept in a temperature-controlled cabinet maintained at  $25^\circ\text{C}$  (within the species' thermoneutral zone; Scholander *et al.* 1950) throughout trials. We used a sampling interval of 20 s to monitor  $\text{VO}_2$  and temperature in the metabolic chambers (mean  $T_{\text{chamber}}$ :  $24.96 \pm 0.78^\circ\text{C}$ ).

We measured body mass before and after both trials and used the mean in conductance and BMR statistical models. Calculations for both conductance and BMR were done using ExpeData V.1.3.10 (Sable Systems, Las Vegas, NV, USA), based on the lowest averaged 10 min of the bird's oxygen consumption. Oxygen consumption was calculated using Equation 10.1 from Lighton (2019) and converted to watts using an equivalent of  $19.8 \text{ kJ} \times \text{L}^{-1} \text{O}_2$  (Gessaman and Nagy 1988). We calculated conductance ( $C$ ) as

$$C = \text{MR} / (T_{\text{body}} - T_{\text{ambient}}),$$

where MR = metabolic rate (Watts),  $T_{\text{body}}$  = mean body temperature, and  $T_{\text{ambient}}$  = mean ambient temperature in the chamber during the lowest 10 min  $\text{VO}_2$ .

### Temperature Data

To illustrate thermal differences across our capture sites, daily mean and minimum temperatures were obtained from weather

**TABLE 1.** Analysis of covariance comparing structural size, wing, and tail lengths in free-living *Plectrophenax nivalis* (Snow Buntings) from the Eastern Canadian population wintering at the northern and southern sites.

Variable	Structural size			Wing length			Tail length		
	<i>F</i>	df	<i>P</i>	<i>F</i>	df	<i>P</i>	<i>F</i>	df	<i>P</i>
Site	0.64	1, 112	0.43	3.40	2, 111	0.07	14.60	3, 110	<0.001
Age	-	-	ns	3.77	2, 111	0.05	13.62	3, 110	<0.001
Date of measurement	-	-	ns	-	-	ns	7.14	3, 110	0.009

ns = nonsignificant, covariates that were tested but excluded from the final models because their effect was nonsignificant. To avoid confusion with the df and *F*-value of the final models, values of nonsignificant variables are represented with a hyphen (-). Models also tested for interactions between site and covariates, but these were not included in the table as they were nonsignificant. See text for details.

stations closest to capture sites (Supplementary Material Table 1) and are presented in Figure 1. Two sources were used depending on the stations: (1) Environment and Climate Change Canada (ECCC) weather office online (<https://weather.gc.ca/>), and (2) ministère de l'Environnement, de la Lutte contre les changements climatiques, de la Faune et des Parcs (MELCCFP; MELCCFP 2023).

### Statistical Analysis

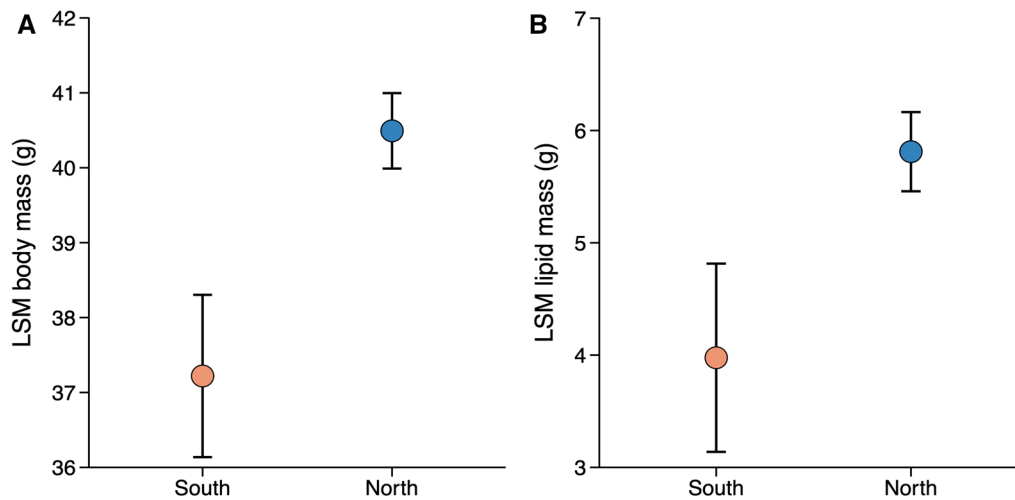
One of our original goals for this study was to examine potential sex effects on our parameters. However, the winter of 2023 was warm, particularly at southern sites where snowfall was minimal, and this led to very low capture success for female *P. nivalis*, with only 9 females in total ( $n=8$  in Cayuga,  $n=1$  in Fergus). We therefore removed females from statistical analyses because (1) sample sizes were strongly unbalanced ( $n=9$  for females compared to  $n=114$  for males) and (2) since females are structurally smaller, the effect of sex could not be differentiated from the effect of structural size with such unbalanced samples. Nonetheless, in the context of differential migration, female data remain important. We thus chose to visually represent females on figures, when possible, although the sex effect is not analyzed or discussed per se. Cayuga was a female-only site and was therefore not considered in analyses. As capture success for southwestern sites (Fergus, Coteau-du-Lac, and Sherbrooke) was lower and led to smaller sample sizes than northeastern sites, we combined these 3 sites and called this the “southern” site. Preliminary analyses (not shown) confirmed that measured variables did not differ among birds from those sites. Rimouski and St-Anaclet-de-Lessard are geographically close (29 km) and were also combined and called the “northern” site (see Figure 1 for the geographical locations of all sites).

To determine whether birds wintering at the northern site experienced greater physiological costs than individuals wintering in the south, we compared structural body size, body composition, plumage insulation as well as physiological maintenance costs between the two sites. Structural body size in birds is often measured as either the first axis (PC1) of a principal component analysis (PCA) combining morphological measurements, such as wing, tail, tarsus and beak lengths (Rising and Somers 1989, Freeman and Jackson 1990, Belthoff and Gauthreaux 1991, Arizaga and Bairlein 2011, Bosman *et al.* 2012, Petit and Vézina 2014a, Le Pogam *et al.* 2020), or as single trait measure, such as wing length (Nolan and Ketterson 1983, Wiklund 1996, Gosler *et al.* 1998, Laplante *et al.* 2019). However, those morphological measurements can also be considered as 2 categories: skeletal and flight feather components. Skeletal components, such as tarsus and beak lengths, represent

structural measurements that vary relatively little once growth is completed. They are generally considered to reflect structural body size (Pascual and Senar 1996, Senar and Pascual 1997, Tellería *et al.* 2013) and are thought to be related to processes occurring during individual development (Tellería *et al.* 2013). In contrast, flight feather components, such as wing and tail lengths, show more short-term variability throughout the individual's life (Pascual and Senar 1996, Flinks and Salewski 2012). They are closely related to seasonal activities, changes in diet, environmental conditions, and other short-term variable effects (Harper 1994, Piersma and Drent 2003, Tellería *et al.* 2013). Therefore, we considered both skeletal and flight feather components separately in our site comparisons. We used the skeletal components to estimate the bird's structural size. To do so, we performed a PCA using the package *FactoMineR* (Lê *et al.* 2008) to combine tarsus and head + beak lengths, head + beak being less variable (CV=2%) than beak length alone (CV=4%). The first axis (PC1) explained the largest proportion of variance (60%) and was retained and used as our structural size variable for subsequent analysis. We initially used analyses of covariance (ANCOVAs) using the *car* package (here and below; Fox and Weisberg 2019) to compare structural size per site while considering the potential effects of bird age (second year or after second year) and date of measurement. However, since no covariates were significant, we used a *t*-test to compare structural size between sites. We also used ANCOVAs to compare flight feather components (wing and tail lengths) between sites, using structural size, age and date of measurement as covariates.

We used the same ANCOVA approach to compare total body, lean and lipid masses, as well as pectoralis muscle thickness between sites while considering the potential effects of structural size, age, and date of measurements as covariates. We further included time of measure as a covariate for total body, lean and lipid masses and keel length (see above) as a covariate for pectoralis muscle thickness. Time spent in captivity (time between capture and measure) depended on the distance between our field laboratory and capture sites and varied from one location to another (mean transportation time:  $31.45 \pm 53.79$  min). Captivity time was thus also considered as a covariate for pectoralis muscle thickness ( $2.39 \pm 1.45$  hr), lipid mass and lean mass ( $1.86 \pm 1.33$  hr). Six individuals were removed from the pectoralis muscle thickness statistical analyses because of missing data.

We also compared conductance and BMR between sites using ANCOVA models. These models included structural size, lean mass, age, date of measurements and time spent in captivity (time between capture and the moment the bird was put



**FIGURE 2.** Site difference in body mass at capture (**A**) and lipid mass (**B**) in free-living *Plectrophenax nivalis* (Snow Buntings) during January and February 2023. Data are least-square means (LSM;  $\pm$  SEM) by site obtained from an analysis of covariance. Covariates for each model are listed in Table 2.

in its metabolic chamber; mean time spent in captivity before conductance:  $16.56 \pm 13.62$  hr) as covariates for conductance, while covariates for BMR included structural size, lean mass, age and time spent in captivity (mean time spent in captivity before BMR:  $17.68 \pm 13.88$  hr). We used lean mass as a covariate rather than body mass because metabolic rates are mainly affected by non-fat components of body mass, which are more metabolically active than adipose tissues (Scott and Evans 1992). Lean mass is indeed regarded as the primary factors influencing the overall metabolic rate in birds (Piersma et al. 1996, Swanson et al. 2017a).

All models included interaction terms site\*covariate, which were removed when non-significant. Repeatability of QMR and pectoralis measurements was calculated as the proportion of the overall variation attributed to variation among individuals between repeated measures (Wolak et al. 2012) using a linear mixed model with the individual as a random factor. Results per site are presented as least-square means (LSM) obtained using the package *lsmeans* (Lenth 2016)  $\pm$  standard error of the mean (SEM) and therefore control for significant covariates (Packard and Boardman 1988) or as mean  $\pm$  SEM. Statistical analyses were performed using R Programming Environment, 4.2.2 (R Core Team, 2022).

For all models, assumptions of normality and homoscedasticity of residuals were visually confirmed using plots of residuals against predicted values (Quinn and Keough 2002). We used an alpha threshold of 0.05 for all statistical tests.

## RESULTS

### Body Size

Structural body size based on skeletal structures did not differ between sites (Table 1, Supplementary Material Figure 1A, see Online Supplementary Material for a color version of this figure). Although the effect of age was only marginally significant, wing length did not differ significantly between sites; however, a trend toward longer wings in the north was observed (Table 1, Supplementary Material Figure 1B, see Online Supplementary Material for a color version of this figure). Birds wintering in the north had, on average, 2% longer tails ( $70.70 \pm 0.29$  mm) than those wintering in the south ( $69.50 \pm 0.56$  mm; Table 1,

Supplementary Material Figure 1C, see Online Supplementary Material for a color version of this figure).

### Body Composition

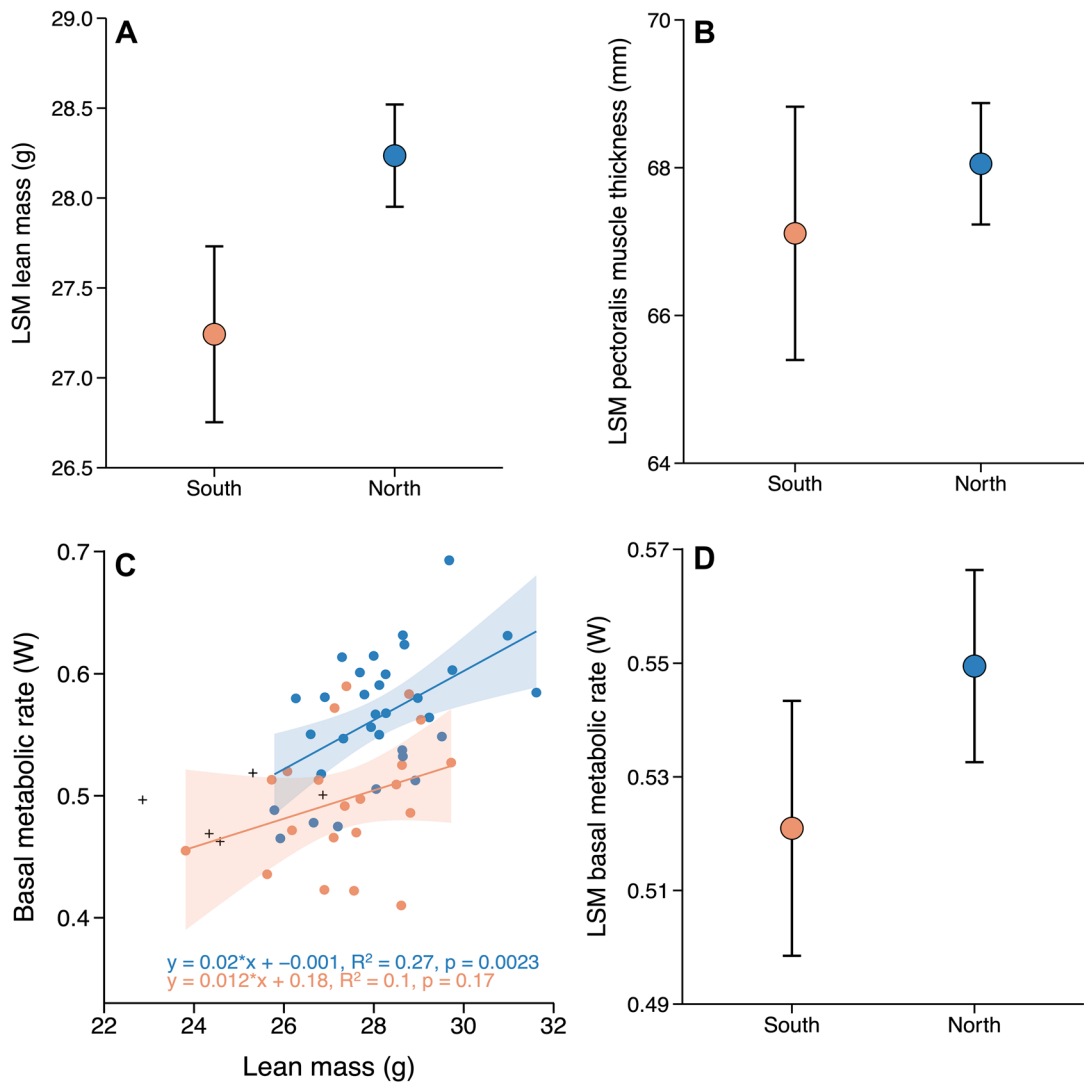
For a given structural size, birds living in the north were, on average, 8% heavier ( $40.50 \pm 0.25$  g) than those wintering in the south ( $37.20 \pm 0.55$  g; Table 2, Figure 2A) and carried, on average, 32% more lipids in the north ( $5.81 \pm 0.18$  g) than in the south ( $3.98 \pm 0.42$  g; Table 2, Figure 2B). We also found a significant difference in lean mass between sites when considering the effects of structural size and time spent in captivity, with birds having 4% more lean mass in the north ( $28.20 \pm 0.14$  g) than in the south ( $27.20 \pm 0.24$  g; Table 2, Figure 3A). Birds wintering in the north also had thicker (1%,  $68.10 \pm 0.41$  mm) pectoralis muscles on average than those wintering at southern sites ( $67.10 \pm 0.86$  mm; Table 3, Figure 3B).

### Metabolic Parameters

Body heat loss did not differ between sites (mean conductance in the north:  $0.022 \pm 0.003$  W °C<sup>-1</sup>; in the south:  $0.021 \pm 0.005$  W °C<sup>-1</sup>; Table 3). However, we found evidences that northern birds experienced on average 8% higher maintenance costs ( $0.554 \pm 0.009$  W) compared to those living in the south ( $0.514 \pm 0.012$  W). While BMR did not vary with structural size (same analysis with structural size instead of lean mass, not shown,  $P=0.4$ ), it increased with lean body mass (Table 3, Figure 3C). Thus, birds carrying more metabolically active tissues also had a higher BMR (Figure 3C). However, statistically controlling for lean mass revealed that part of the maintenance cost was independent of the amount of metabolically active lean tissues present in birds. Indeed, northern birds still had a BMR 6% higher ( $0.550 \pm 0.008$  W) than *P. nivalis* wintering in the south ( $0.52 \pm 0.01$  W) when controlling for lean mass (Table 3, Figure 3D).

## DISCUSSION

We studied *P. nivalis* phenotypes comparing southern and northern birds in Eastern Canada and expected to find birds wintering in the north to be structurally larger, heavier and to



**FIGURE 3.** Site difference in lean mass (**A**), pectoralis muscle thickness (**B**), basal metabolic rate (**D**), and the relationship between basal metabolic rate and lean mass per site (**C**) in free-living *Plectrophenax nivalis* (Snow Buntings) during January and February 2023. Data for lean mass (**A**), pectoralis muscle thickness (**B**), and basal metabolic rate (**D**) are least-square means (LSM;  $\pm$  SEM) by site obtained from an analysis of covariance. Covariates for each model are listed in Tables 2 and 3. Note that the interaction lean mass\*site for basal metabolic rate is not significant but is presented to visualize the site effect (**C**). Females were not included in analyses but are visually represented with crosses for basal metabolic rate (**C**). Individuals wintering in the northern site are represented in blue while individuals wintering in the southern sites are represented in orange.

carry more lipid stores and have more lean tissues. We also expected birds at northern sites to have larger pectoralis muscles, better feather insulation, and higher maintenance costs. We found that birds had similar structural size and body heat loss across sites. Nevertheless, birds wintering in the north were 8% heavier and carried, on average, 32% more lipids than *P. nivalis* wintering in the south. They also had longer tails and tended to have longer wings. Northern birds further maintained thicker pectoralis muscles, had 4% more lean tissues, and experienced 8% higher maintenance costs on average, costs that were still 6% higher after statistically controlling for the effect of metabolically active lean tissue mass. Although based on a single winter of data, these results suggest that *P. nivalis* wintering farther north pays a significant and measurable cost of wintering in the cold possibly to gain the expected fitness advantage of shorter spring migration distances to their Arctic breeding grounds.

### Morphological Traits and Body Composition

Our findings indicate that *P. nivalis* wintering in colder and harsher northern regions (Laplante et al. 2019) are not structurally larger but do have longer tails and marginally longer wings. These results are comparable to those of previous studies on the same Canadian population showing that *P. nivalis* wintering in cold and snowy sites have longer wings than individuals spending the winter in milder conditions (Macdonald et al. 2016, Mckinnon et al. 2019). Other studies have also reported larger birds at cold northern winter sites but, although they often incorporated wing and/or tail length in their size calculation (e.g., Prescott 1994, DeVries et al. 2022) or relied solely on wing length for sizing estimations (e.g., James 1970, Ashton 2002, Romano et al. 2020), those studies typically did not make the distinction between skeletal and flight feather metrics of body size. Longer wings are thought to improve flight efficiency in some cases (Roeder et al. 2019,

**TABLE 2.** Analysis of covariance (ANCOVA) comparing body, lipid, and lean masses in free-living *Plectrophenax nivalis* (Snow Buntings) from the Eastern Canadian population wintering at the northern and southern sites.

Variable	Body mass at capture			Lipid mass			Lean mass		
	F	df	P	F	df	P	F	df	P
Site	68.33	4, 109	<0.001	92.17	3, 110	<0.001	10.51	3, 110	0.002
Age	-	-	ns	-	-	ns	-	-	ns
Structural size	5.53	4, 109	0.02	-	-	Ns	3.87	3, 110	0.05
Date of measurement	3.59	4, 109	0.06	24.04	3, 110	<0.001	-	-	ns
Time of measurement	5.01	4, 109	0.03	-	-	ns	-	-	ns
Time spent in captivity				7.15	3, 110	0.009	10.03	3, 110	0.002

ns = nonsignificant, covariates that were tested but excluded from the final models because their effect was nonsignificant. To avoid confusion with the df and F-value of the final models, values of nonsignificant variables are represented with a hyphen (-). Variables that were not included as covariates in the initial model are represented with an empty cell. Models also tested for interactions between site and covariates but these were not included in the table as they were nonsignificant. See text for details.

**TABLE 3.** Analysis of covariance (ANCOVA) models comparing pectoralis muscles thickness, conductance, and basal metabolic rate in free-living *Plectrophenax nivalis* (Snow Buntings) from the Eastern Canadian population wintering at the northern and southern sites.

Variable	Pectoralis muscle thickness			Conductance			Basal metabolic rate		
	F	df	P	F	df	P	F	df	P
Site	142.51	6, 93	<0.001	0.32	2, 47	0.57	30.40	3, 48	<0.001
Age	14.49	6, 93	<0.001	-	-	ns	-	-	ns
Structural size				-	-	ns	-	-	ns
Body mass at capture	47.57	6, 93	<0.001						
Date of measurement	58.22	6, 93	<0.001	-	-	ns			
Time spent in captivity	19.47	6, 93	<0.001	10.64	2, 47	0.002	11.08	3, 48	0.002
Keel length	191.94	6, 93	<0.001						
Lean mass				-	-	ns	13.93	3, 48	<0.001

ns = nonsignificant, covariates that were tested but excluded from the final models because their effect was nonsignificant. To avoid confusion with the df and F-value of the final models, values of nonsignificant variables are represented with a hyphen (-). Variables that were not included as covariates in the initial model are represented with an empty cell. Models also tested for interactions between site and covariates, but these were not included in the table as they were nonsignificant. See text for details.

Ydenberg et al. 2023) and, in species using bounding flight, longer tails are thought to enhance lift and stability (Sachs and Lenz 2011, Roeder et al. 2019). While *P. nivalis* were structurally comparable between sites, northern individuals were nevertheless 8% heavier and carried 32% more lipids on average than those wintering in the south. It thus appears that individuals with longer wings and tails in the north could have been advantaged to carry their heavier weight (Norberg 1995, Swaddle et al. 1996). This also corroborates earlier observations in *P. nivalis* where larger males, characterized by longer wings, winter north relative to smaller females (Macdonald et al. 2016).

*Plectrophenax nivalis* are considered nomadic birds in winter (Macdonald et al. 2012, Simard-Provençal 2024), with cumulative movements averaging  $121 \pm 46$  km from December to February (Mckinnon et al. 2019) likely in response to locally reduced food access due to snow cover (Laplante et al. 2019). However, they can also winter at very distant locations among years. For example, an individual wintering in Western Europe one winter was found in North America the next (Banks et al.

1991). It is not clear at the moment what may drive the choice of specific wintering sites. For example, site choice could be partly driven by the capacity of birds to carry a heavier body (e.g., flight feather length). However, constraints during molt can affect feather quality and flight feather length (Pehrsson 1987, Murphy et al. 1988, Pap et al. 2008) while wear and tear of plumage can lead to a loss of flight performance (Swaddle et al. 1996, Hedenström 2023). Given that life at colder and harsher northern sites likely requires more lipid stores (this study), it is reasonable to assume that *P. nivalis* might be forced to winter farther south to reduce flight costs and loss of maneuverability on years when wings and tails are shorter (Norberg 1995, Tellería et al. 2001). This would suggest that conditions during molt in the Arctic could have far-reaching downstream effects on wintering costs and location, although this requires further studies.

The observed 32% greater lipid reserves in birds at northern sites is most likely a response to cold and unpredictable wintering conditions in the north (Laplante et al. 2019). Indeed, outdoor captive *P. nivalis* kept in the same area as our northern

sites have been shown to increase their lipid mass by 246% during the fall transition toward winter (August to October) and to maintain these large lipid stores throughout the winter (Le Pogam *et al.* 2020). Laplante *et al.* (2019) further showed that snow depth and temperature are important predictors of lipid storage in free-living *P. nivalis* with birds carrying larger lipid stores on colder and snowier days. Lipids are the prime metabolic fuel for small avian species during winter (Blem 1976, Dawson *et al.* 1983). Storing lipids not only helps birds endure prolonged cold nocturnal fasts but also prepares them to cope with unpredictable food availability (Blem 1976, Lehi-koinen 1987, Marsh and Dawson 1989, O'Connor 1995, Gosler 1996). Our data thus support the prediction that *P. nivalis* wintering closer to their breeding grounds are required to carry larger amounts of lipids to face colder and snowier winters, shorter day lengths and likely more unpredictable conditions than their southern counterparts.

Living in the cold typically leads to a gain in lean mass for birds (Dawson and Marsh 1986, Petit *et al.* 2014), including in captive *P. nivalis* (Le Pogam *et al.* 2020), a pattern that aligns with our observations, as northern birds exhibited 4% higher lean mass (Figure 3A). This is often explained by an increase in the size of several internal organs such as nutritional and cardiopulmonary organs (Zheng *et al.* 2008, Liknes and Swanson 2011, Swanson and Merkord 2013, Barceló *et al.* 2017), as well as pectoralis muscles (O'Connor 1995, Cooper 2002). Our data also revealed that pectoralis muscle thickness was greater in the north and increased with total body mass in *P. nivalis*, a relationship also observed in other avian species (Marsh and Storer 1981, Marsh 1984, Lindström *et al.* 2000, Vézina *et al.* 2006b). Therefore, while thicker pectoralis muscles could be advantageous for shivering heat production in the north (O'Connor 1995, Cooper 2002, Petit and Vézina 2014a, Swanson *et al.* 2017a, Milbergue *et al.* 2018), it likely also supports flight with a heavier body (Marsh and Storer 1981, Marsh 1984, Lindström *et al.* 2000, Dietz *et al.* 2007) and higher wing-loading (Marsh and Storer 1981, Fry *et al.* 1972).

### Metabolic Parameters

Body heat loss, measured as thermal conductance, did not differ significantly between birds wintering at the northern and southern sites. Therefore, it appears that *P. nivalis* wintering at northern, colder sites do not benefit from better insulation. Our conductance values ( $0.022\text{W } ^\circ\text{C}^{-1}$ ) at the northern sites are comparable to those reported by Demers *et al.* (2023) ( $\sim 0.025\text{W } ^\circ\text{C}^{-1}$ ) for the same location in *P. nivalis*. However, Demers *et al.* (2023) also reported a 12% greater heat loss in adult birds relative to juveniles experiencing their first winter of life, a difference that was not detected in our study. This inconsistency most likely results from differences in sampling protocols and variability among years as Demers *et al.* (2023) used data collected over three years ( $n=189$ , including 102 first-year birds) while the current study was conducted in a single winter ( $n=28$  at the northern sites, including 10 first-year birds).

Our data also revealed that birds wintering at northern sites experienced 8% higher maintenance costs, measured as BMR (McKechnie *et al.* 2015, Swanson *et al.* 2017b). Elevated BMR is commonly reported during the cold season in birds experiencing seasonal environments (Broggi *et al.* 2007, Zheng *et al.* 2014, Broggi *et al.* 2019). It is also observed at colder northern

latitudes (Piersma *et al.* 1996, Broggi *et al.* 2007, Wiersma *et al.* 2007, Zheng *et al.* 2014, Broggi *et al.* 2019) and in captive birds maintained in cold experimental conditions (Vézina *et al.* 2006a, Barceló *et al.* 2017, but see Le Pogam *et al.* 2020, see McKechnie 2008, McKechnie *et al.* 2015, Swanson *et al.* 2022 for reviews).

Changes in maintenance costs are typically associated with phenotypic adjustments in several physiological traits. For example, Petit *et al.* (2014) reported a 6% seasonal increase in BMR in wintering *Poecile atricapillus* (Black-capped Chickadee) compared to the summer phenotype, a difference similar to the one reported here. Although seemingly modest, this increase in metabolic rate was nevertheless associated with major changes in body composition, including the enlargement of highly active organs such as flight muscles, the heart, kidneys and intestines (Petit *et al.* 2014), changes that are in direct response to experienced environmental constraints. For example, as cold exposure leads to higher rates of daily food intake (McWilliams *et al.* 1999, Williams and Tieleman 2000, Vézina *et al.* 2006a), cold acclimation and acclimatization are typically associated with enlarged digestive and excretory organs (Williams and Tieleman 2000, Zheng *et al.* 2008, Petit *et al.* 2014, Barceló *et al.* 2017), which contribute to increased BMR (Williams and Tieleman 2000, Li *et al.* 2011, Petit *et al.* 2014, Barceló *et al.* 2017). Latitude effects have also been reported on maintenance costs for other non-migrant species. For instance, Broggi *et al.* (2007) compared two populations of *Parus major* (Great Tit) wintering at different latitudes (Lund:  $55^\circ40'\text{N}$ ,  $13^\circ25'\text{E}$  and Oulu:  $65^\circ00'\text{N}$ ,  $25^\circ30'\text{E}$ ) in Sweden over 6 consecutive winters and reported consistently higher BMR in birds of the northern population.

Lean mass had a clear influence on maintenance costs in *P. nivalis* (Figure 3C), but our data also show that BMR was not solely driven by the amount of metabolically active tissues. Indeed, the site effect remained significant after statistically controlling for lean mass, with birds wintering in the north still experiencing a 6% higher BMR. In other words, basal metabolic rate was also higher per unit of lean tissue mass in northern wintering birds, indicating an upregulation of metabolic intensity in individuals facing harsher conditions. Metabolic intensity is typically attributed to the cellular metabolism of vital tissues (Swanson and Olmstead 1999, Broggi *et al.* 2007, Zheng *et al.* 2008, Petit and Vézina 2014b, Swanson *et al.* 2017b). Collectively, these results thus support the hypothesis that *P. nivalis* experience high maintenance cost, and to a certain degree, disproportionately high maintenance cost per unit lean mass, when wintering at northern sites.

### Conclusions

*Plectrophenax nivalis* from the Eastern Canadian population exhibit differential distribution on their wintering grounds, leading individuals at different latitudes to experience diverse winter conditions. Birds wintering at northern sites may benefit from early arrival on their Arctic breeding grounds and higher reproductive success (Guindre-Parker *et al.* 2013), but wintering closer to their breeding habitat could also come with the cost of supporting the physiological machinery required to survive in these conditions. Indeed, wintering birds measured at our northern sites were heavier, carried more body lipids, had higher amounts of lean tissues and experienced higher

physiological maintenance costs, likely driven in part by larger internal organs associated with life in the cold (Williams and Tieleman 2000, Li et al. 2011, Barceló et al. 2017). Birds caught in the north also had larger flight muscles, which help flying with a heavier body (Pennycuik 1975, Marsh and Storer 1981, Marsh 1984, Lindström et al. 2000, Dietz et al. 2007) and produce heat during shivering (Marsh and Dawson 1989, Swanson 2010). While our study exclusively focused on male *P. nivalis*, future investigations should compare wintering physiology in both males and females, the latter having recently been found to carry a disproportionate amount of lipids compared to males (Laplante et al. 2019), possibly highlighting different demands and constraints between sexes during the cold season.

## Supplementary material

Supplementary material is available at *Ornithology* online.

## Acknowledgements

We thank Étienne Lampron for his help in catching and measuring Snow Buntings. We also thank Sarah Sénécal, Inès Fache, Baptiste Courtin, and Sachin Anand for their punctual help in catching and measuring birds in the wild and Robin Turcotte, Martine Belzile, Gratien Bélanger, and Sylvie Foucault for granting access to their land for Snow Bunting captures. We are grateful to Patrice Bourgault, Nancy Furber, David Lamble, Rick Ludkin, and Rodger D. Titman for granting access to their feeding stations and for their help in catching birds. We are also grateful to Alain Caron for statistical advice, Lyette Régimbald for her help with bird maintenance, and two anonymous reviewers for constructive comments. We are thankful to Louis Drainville from Terre-Eau inc. for encouraging and supporting this project.

## Funding statement

This research was supported by The Natural Sciences and Engineering Research Council of Canada (NSERC) Discovery grants to F.V. (grant no. 05628) and O.P.L. (grant no. 05507) as well as a NSERC Collaborative Research and Development grant to F.V. (grant no. 536310).

## Ethics statement

All bird handling and measurements were approved by the animal care committee of the Université du Québec à Rimouski (CPA-92-22-250) and were conducted under scientific (SC-48) and banding (10511, 10622, 10622F, 10752, 10889, 10892B) permits from Environment and Climate Change Canada.

## Conflict of interest statement

The authors have no competing interests.

## Author contributions

M.T., A.L.P., F.V., and O.P.L. conceived the ideas and designed methodology; M.T. collected and analyzed the data; M.T., A.L.P., F.V., and O.P.L. led the writing of the manuscript. All authors contributed critically to the drafts and gave final approval for publication.

## Data availability

Analyses reported in this article can be reproduced using the data provided by Turcotte et al. (2025).

## LITERATURE CITED

- Arizaga, J., and F. Bairlein (2011). The role of age, sex, subspecies, body size and fuel load in determining the social status of a migratory passerine during the non-breeding period. *Ornis Fennica* 88:154–160.
- Ashton, K. G. (2002). Patterns of within-species body size variation of birds: Strong evidence for Bergmann's rule. *Global Ecology and Biogeography* 11:505–523.
- Baldwin, J. W., J. Garcia-Porta, and C. A. Botero (2023). Complementarity in Allen's and Bergmann's rules among birds. *Nature Communications* 14:4240.
- Banks, K. W., H. Clark, I. R. K. Mackay, S. G. Mackay, and R. M. Sellers (1991). Origins, population structure and movements of Snow Buntings *Plectrophenax nivalis* wintering in Highland Region, Scotland. *Bird Study* 38:10–19.
- Barceló, G., O. P. Love, and F. Vézina (2017). Uncoupling basal and summit metabolic rates in White-throated Sparrows: Digestive demand drives maintenance costs, but changes in muscle mass are not needed to improve thermogenic capacity. *Physiological Zoology* 90:153–165.
- Belthoff, J. R., and S. A. Gauthreaux (1991). Partial migration and differential winter distribution of House Finches in the eastern United States. *The Condor* 93:374–382.
- Blem, C. R. (1973). Geographic variation in the bioenergetics of the House Sparrow. In *A Symposium on the House Sparrow (Passer domesticus) and European Tree Sparrow (P. Montanus) in North America* (S. Charles Kendeigh, Chairman). *Ornithological Monographs* 14:96–121.
- Blem, C. R. (1976). Patterns of lipid storage and utilization in birds. *American Zoologist* 16:671–684.
- Blem, C. R. (1981). Geographic variation in mid-winter body composition of starlings. *The Condor* 83:370–376.
- Bosman, D. S., H. J. Verduyn, E. W. Stienen, M. Vincx, L. De Neve, and L. U. C. Lens (2012). Effects of body size on sex-related migration vary between two closely related gull species with similar size dimorphism. *Ibis* 154:52–60.
- Broggi, J., E. Hohtola, K. Koivula, M. Orell, R. L. Thomson, and J. Å. Nilsson (2007). Sources of variation in winter basal metabolic rate in the Great Tit. *Functional Ecology* 21:528–533.
- Broggi, J., J. F. Nilsson, K. Koivula, E. Hohtola, and J. Å. Nilsson (2019). Mass or pace? Seasonal energy management in wintering boreal passerines. *Oecologia* 189:339–351.
- Carey, C. (2012). *Avian Energetics and Nutritional Ecology*. Springer Science & Business Media, Dordrecht, The Netherlands.
- Cooper, S. J. (2002). Seasonal metabolic acclimatization in Mountain Chickadees and Juniper Titmice. *Physiological Zoology* 75:386–395.
- Cooper, S. J. (2007). Daily and seasonal variation in body mass and visible fat in Mountain Chickadees and Juniper Titmice. *The Wilson Journal of Ornithology* 119:720–724.
- Cooper, S. J., and D. L. Swanson (1994). Seasonal acclimatization of thermoregulation in the Black-capped Chickadee. *The Condor* 96:638–646.
- Cristol, D. A., M. B. Baker, and C. Carbone (1999). Differential migration revisited: Latitudinal segregation by age and sex class. *Current Ornithology* 15:33–88.

- Dawson, W. R., and R. L. Marsh (1986). Winter fattening in the American Goldfinch and the possible role of temperature in its regulation. *Physiological Zoology* 59:357–368.
- Dawson, W. R., R. L. Marsh, and M. E. Yacoe (1983). Metabolic adjustments of small passerine birds for migration and cold. *American Journal of Physiology-Regulatory, Integrative and Comparative Physiology* 245:R755–R767.
- Demers, R., R. S. O'Connor, A. Le Pogam, K. G. Young, D. Berteaux, A. Tam, and F. Vézina (2023). Born in the cold: Contrasted thermal exchanges and maintenance costs in juvenile and adult Snow Buntings on their breeding and wintering grounds. *Journal of Comparative Physiology B* 193:557–568.
- DeVries, M. S., M. Waraczynski, D. Baldassarre, M. Slevin, R. Anderson, and J. Jawor (2022). Geographic variation in morphology of Northern Cardinals: Possible application of Bergmann's rule? *Journal of Field Ornithology* 93:9.
- Dietz, M. W., T. Piersma, A. Hedenström, and M. Brugge (2007). Intra-specific variation in avian pectoral muscle mass: Constraints on maintaining manoeuvrability with increasing body mass. *Functional Ecology* 21:317–326.
- Dingle, H., and V. A. Drake (2007). What is migration? *Bioscience* 57:113–121.
- Flinks, H., and V. Salewski (2012). Quantifying the effect of feather abrasion on wing and tail lengths measurements. *Journal of Ornithology* 153:1053–1065.
- Fox, J., and S. Weisberg (2019). *An R Companion to Applied Regression*, third edition. Sage Publishing, Thousand Oaks, CA, USA.
- Freeman, S., and W. M. Jackson (1990). Univariate metrics are not adequate to measure avian body size. *The Auk* 107:69–74.
- Fry, C. H., I. J. Ferguson-Lees, and R. J. Dowsett (1972). Flight muscle hypertrophy and ecophysiological variation of Yellow Wagtail *Motacilla flava* races at Lake Chad. *Journal of Zoology* 167:293–306.
- Gessaman, J. A., and K. A. Nagy (1988). Energy metabolism: Errors in gas-exchange conversion factors. *Physiological Zoology* 61:507–513.
- Gosler, A. G. (1996). Environmental and social determinants of winter fat storage in the Great Tit *Parus major*. *Journal of Animal Ecology* 65:1–17.
- Gosler, A. G. (2002). Strategy and constraint in the winter fattening response to temperature in the Great Tit *Parus major*. *Journal of Animal Ecology* 71:771–779.
- Gosler, A. G., J. J. D. Greenwood, J. K. Baker, and N. C. Davidson (1998). The field determination of body size and condition in passerines: A report to the British Ringing Committee. *Bird Study* 45:92–103.
- Guglielmo, C. G., L. P. McGuire, A. R. Gerson, and C. L. Seewagen (2011). Simple, rapid, and non-invasive measurement of fat, lean, and total water masses of live birds using quantitative magnetic resonance. *Journal of Ornithology* 152:75–85.
- Guindre-Parker, S., H. G. Gilchrist, S. Baldo, S. M. Doucet, and O. P. Love (2013). Multiple achromatic plumage ornaments signal to multiple receivers. *Behavioral Ecology* 24:672–682.
- Harper, D. G. C. (1994). Some comments on the repeatability of measurements. *Ringling & Migration* 15:84–90.
- Hedenström, A. (2023). Effects of wing damage and moult gaps on vertebrate flight performance. *Journal of Experimental Biology* 226:jeb227355.
- Hill, R. W., G. A. Wyse, and M. Anderson (2016). *Animal Physiology*. Oxford University Press, Oxford, UK.
- James, F. C. (1970). Geographic size variation in birds and its relationship to climate. *Ecology* 51:365–390.
- Kendeigh, S. C., and C. R. Blem (1974). Metabolic adaptation to local climate in birds. *Comparative Biochemistry and Physiology Part A: Molecular & Integrative Physiology* 48:175–187.
- Ketterson, E. D., and V. Nolan (1976). Geographic variation and its climatic correlates in the sex ratio of eastern-wintering Dark-eyed Juncos (*Junco hyemalis hyemalis*). *Ecology* 57:679–693.
- King, J. R. (1972). Adaptive periodic fat storage by birds. In *Proceedings of the 15th International Ornithological Congress* (K. H. Voos, Editor). E.J. Brill, Leiden, The Netherlands. pp. 200–217.
- Laplante, M. P., E. A. Mckinnon, O. P. Love, and F. Vézina (2019). Flexible response to short-term weather in a cold-adapted songbird. *Journal of Avian Biology* 50:1–10.
- Lê, S., J. Josse, and F. Husson (2008). FactoMineR: An R package for multivariate analysis. *Journal of Statistical Software*. 25:1–18.
- Lehikoinen, E. (1987). Seasonality of the daily weight cycle in wintering passerines and its consequences. *Ornis Scandinavica* 18:216–226.
- Lenth, R. V. (2016). Least-squares means: The R Package lsmeans. *Journal of Statistical Software* 69:1–33.
- Le Pogam, A., O. P. Love, L. Régimbald, K. Dubois, F. Hallot, M. Milbergue, M. Petit, R. S. O'Connor, and F. Vézina (2020). Wintering Snow Buntings elevate cold hardiness to extreme levels but show no changes in maintenance costs. *Physiological and Biochemical Zoology* 93:417–433.
- Li, M., Y. Yin, C. Nie, L. Qu, G. Zhnag, Y. Liang, X. Zhao, and J. Liu (2011). Relationship between organ masses and basal metabolic rate (BMR) in Tree Sparrows (*Passer montanus*). *Journal of Northeast Agricultural University* 18:39–49.
- Lighton, J. R. B. (2019). *Measuring Metabolic Rates: A Manual for Scientists*, second edition. Oxford University Press, Oxford, UK.
- Liknes, E. T., and D. L. Swanson (1996). Seasonal variation in cold tolerance, basal metabolic rate, and maximal capacity for thermogenesis in white-breasted Nuthatches *Sitta carolinensis* and Downy Woodpeckers *Picoides pubescens*, two unrelated arboreal temperate residents. *Journal of Avian Biology* 27:279–288.
- Liknes, E. T., and D. L. Swanson (2011). Phenotypic flexibility of body composition associated with seasonal acclimatization in passerine birds. *Journal of Thermal Biology* 36:363–370.
- Lindström, Å., A. Kvist, T. Piersma, A. Dekinga, and M. W. Dietz (2000). Avian pectoral muscle size rapidly tracks body mass changes during flight, fasting and fuelling. *Journal of Experimental Biology* 203:913–919.
- Macdonald, C. A., K. C. Fraser, H. G. Gilchrist, T. K. Kyser, J. W. Fox, and O. P. Love (2012). Strong migratory connectivity in a declining Arctic passerine. *Animal Migration* 1:23–30.
- Macdonald, C. A., E. A. Mckinnon, H. G. Gilchrist, and O. P. Love (2016). Cold tolerance, and not earlier arrival on breeding grounds, explains why males winter further north in an Arctic-breeding songbird. *Journal of Avian Biology* 47:7–15.
- Marsh, R. L. (1984). Adaptations of the Gray Catbird *Dumetella carolinensis* to long-distance migration: Flight muscle hypertrophy associated with elevated body mass. *Physiological Zoology* 57:105–117.
- Marsh, R. L., and W. R. Dawson (1989). Avian adjustments to cold. In *Animal Adaptation to Cold*. SpringerBerlin Heidelberg, Berlin, Germany. pp. 205–253.
- Marsh, R. L., and R. W. Storer (1981). Correlation of flight-muscle size and body mass in Cooper's Hawks: A natural analogue of power training. *Journal of Experimental Biology* 91:363–368.
- McKechnie, A. E. (2008). Phenotypic flexibility in basal metabolic rate and the changing view of avian physiological diversity: A review. *Journal of Comparative Physiology B* 178:235–247.

- McKechnie, A. E., M. J. Noakes, and B. Smit (2015). Global patterns of seasonal acclimatization in avian resting metabolic rates. *Journal of Ornithology* 156:367–376.
- Mckinnon, E. A., M. P. Laplante, O. P. Love, K. C. Fraser, S. Mackenzie, and F. Vézina (2019). Tracking landscape-scale movements of Snow Buntings and weather-driven changes in flock composition during the temperate winter. *Frontiers in Ecology and Evolution* 7:329.
- Mckinnon, E. A., C. M. Macdonald, H. G. Gilchrist, and O. P. Love (2016). Spring and fall migration phenology of an Arctic-breeding passerine. *Journal of Ornithology* 157:681–693.
- McNab, B. K. (1980). On estimating thermal conductance in endotherms. *Physiological Zoology* 53:145–156.
- McNab, B. K. (1997). On the utility of uniformity in the definition of basal rate of metabolism. *Physiological Zoology* 70:718–720.
- McNamara, J. M., A. I. Houston, and J. R. Krebs (1990). Why hoard? the economics of food storing in tits, *Parus* spp. *Behavioral Ecology* 1:12–23.
- McWilliams, S. R., E. Caviedes-Vidal, and W. H. Karasov (1999). Digestive adjustments in Cedar Waxwings to high feeding rates. *Journal of Experimental Zoology* 283:394–407.
- Meltofte, H. (1983). Arrival and pre-nesting period of the Snow Bunting *Plectrophenax nivalis* in East Greenland. *Polar Research* 1:185–198.
- Milbergue, M. S., P. U. Blier, and F. Vézina (2018). Large muscles are beneficial but not required for improving thermogenic capacity in small birds. *Scientific Reports* 8:14009.
- Ministère de l'Environnement et de la Lutte contre les changements climatiques, de la Faune et des Parcs (2023). *Données du Réseau de surveillance du climat du Québec*, Direction de la qualité de l'air et du climat, Québec, Canada.
- Møller, A. P. (1994). Phenotype-dependent arrival time and its consequences in a migratory bird. *Behavioral Ecology and Sociobiology* 35:115–122.
- Montgomerie, R., and B. Lyon (2020). Snow Bunting (*Plectrophenax nivalis*), version 1.0. In *Birds of the World* (S. M., Billerman, B. K., Keeney, P. G., Rodewald and T. S., Schulenberg, Editors). Cornell Lab of Ornithology, Ithaca, NY, USA. <https://doi.org/10.2173/bow.snobun.01>
- Morton, M. L. (1984). Sex and age ratios in wintering White-crowned Sparrows. *The Condor* 86:85–87.
- Murphy, M. E., J. R. King, and J. Lu (1988). Malnutrition during the postnuptial molt of White-crowned Sparrows: Feather growth and quality. *Canadian Journal of Zoology* 66:1403–1413.
- Nolan Jr. V., and E. D. Ketterson (1983). An analysis of body mass, wing length, and visible fat deposits of Dark-eyed Juncos wintering at different latitudes. *The Wilson Bulletin* 95:603–620.
- Norberg, U. M. (1995). How a long tail and changes in mass and wing shape affect the cost for flight in animals. *Functional Ecology* 9:48–54.
- O'Connor, T. P. (1995). Metabolic characteristics and body composition in House Finches: Effects of seasonal acclimatization. *Journal of Comparative Physiology B* 165:298–305.
- Olson, V. A., R. G. Davies, C. D. L. Orme, G. H. Thomas, S. Meiri, T. M. Blackburn, K. J. Gaston, I. P. F. Owens, and P. M. Bennett (2009). Global biogeography and ecology of body size in birds. *Ecology Letters* 12:249–259.
- Packard, G. C., and T. J. Boardman (1988). The misuse of ratios, indices, and percentages in ecophysiological research. *Physiological Zoology* 61:1–9.
- Pap, P. L., C. I. Vagasi, G. A. Czirjak, and Z. Barta (2008). Diet quality affects postnuptial molting and feather quality of the House Sparrow (*Passer domesticus*): Interaction with humoral immune function? *Canadian Journal of Zoology* 86:834–842.
- Paprocki, N., and C. J. Conway (2024). The underlying causes of differential migration: Assumptions, hypotheses, and predictions. *Biological Reviews* 100:764–789.
- Pascual, J., and J. C. Senar (1996). What are different biometric measurements of avian body size actually measuring? *Butlletí del Grup Català d'Anellament* 13:1–8.
- Pehrsson, O. (1987). Effects of body condition on molting in Mallards. *The Condor* 89:329–339.
- Pennycuik, C. J. (1975). Mechanics of flight. In *Avian Biology*, volume 5 (D. S. Farner and J. R. King, Editors). Academic Press, Cambridge, MA, USA. pp. 1–75
- Petit, M., A. Lewden, and F. Vézina (2014). How does flexibility in body composition relate to seasonal changes in metabolic performance in a small passerine wintering at northern latitude? *Physiological and Biochemical Zoology* 87:539–549.
- Petit, M., and F. Vézina (2014a). Phenotype manipulations confirm the role of pectoral muscles and haematocrit in avian maximal thermogenic capacity. *Journal of Experimental Biology* 217:824–830.
- Petit, M., and F. Vézina (2014b). Reaction norms in natural conditions: How does metabolic performance respond to weather variations in a small endotherm facing cold environments? *PLoS One* 9:e113617.
- Piersma, T., L. Bruinzeel, R. Drent, M. Kersten, J. Van der Meer, and P. Wiersma (1996). Variability in basal metabolic rate of a long-distance migrant shorebird (Red Knot, *Calidris canutus*) reflects shifts in organ sizes. *Physiological Zoology* 69:191–217.
- Piersma, T., and J. Drent (2003). Phenotypic flexibility and the evolution of organismal design. *Trends in Ecology & Evolution* 18:228–233.
- Prescott, D. R. (1994). Intraspecific and geographical trends in body size of a differential migrant, the Evening Grosbeak. *The Auk* 111:693–702.
- Pyle, P. (1997). *Identification Guide to North American Birds. Part 1: Columbidae to Ploceidae*. Slate Creek Press, Bolinas, CA, USA.
- Quinn, G. P., and M. J. Keough (2002). *Experimental Design and Data Analysis for Biologists*. Cambridge University Press, Cambridge, UK.
- R Core Team (2022). *R: A Language and Environment for Statistical Computing*. R Foundation for Statistical Computing, Vienna, Austria. <https://www.R-project.org/>
- Rae, R., and M. Marquiss (1989). Ageing and sexing of Snow Buntings wintering on the Aberdeenshire coast, their biometrics and sex ratio. *Ringling & Migration* 10:133–140.
- Rising, J. D., and K. M. Somers (1989). The measurement of overall body size in birds. *The Auk* 106:666–674.
- Roeder, D. V., M. S. Husak, M. T. Murphy, and M. A. Patten (2019). Size, ornamentation, and flight feather morphology promote within-pair paternity in a sexually dimorphic passerine. *Behavioral Ecology and Sociobiology* 73:1–12.
- Romano, A., R. Séchaud, and A. Roulin (2020). Generalized evidence for Bergmann's rule: Body size variation in a cosmopolitan owl genus. *Journal of Biogeography* 48:51–63.
- Rotics, S., M. Kaatz, S. Turjeman, D. Zurell, M. Wikelski, N. Sapir, U. Eggers, W. Fiedler, F. Jeltsch, and R. Nathan (2018). Early arrival at breeding grounds: Causes, costs and a trade-off with overwintering latitude. *Journal of Animal Ecology* 87:1627–1638.
- Royer-Boutin, P., P. A. Cortés, M. S. Milbergue, M. Petit, and F. Vézina (2015). Estimation of muscle mass by ultrasonography differs between observers and life states of models in small birds. *Physiological and Biochemical Zoology* 88:336–344.
- Saarela, S., B. Klapper, and G. Heldmaier (1989). Thermogenic capacity of greenfinches and siskins in winter and summer. In *Physiology of*

- Cold Adaptation in Birds* (C. Bech and R. E. Reinertsen, Editors). Springer, New York, NY, USA. pp. 115–122.
- Sachs, G., and J. Lenz (2011). New modeling approach for bounding flight in birds. *Mathematical Biosciences* 234:75–83.
- Scott, I., and P. R. Evans (1992). The metabolic output of avian (*Sturnus vulgaris*, *Calidris alpina*) adipose tissue liver and skeletal muscle: Implications for BMR/body mass relationships. *Comparative Biochemistry and Physiology* 103:329–332.
- Scholander, P. F., R. Hock, V. Walters, and L. Irving (1950). Adaptation to cold in Arctic and tropical mammals and birds in relation to body temperature, insulation, and basal metabolic rate. *Biological Bulletin* 99:259–271.
- Senar, J. C., and J. Pascual (1997). Keel and tarsus length may provide a good predictor of avian body size. *Ardea* 85:269–274.
- Simard-Provençal, S. (2024). Examining environmental and life history correlates of winter and migratory movements in a nomadic Arctic-breeding passerine. M.S. Thesis. University of Windsor, Ontario, Canada.
- Stager, M., N. R. Sennner, B. W. Tobalske, and Z. A. Cheviron (2020). Body temperature maintenance acclimates in a winter-tenacious songbird. *Journal of Experimental Biology* 223:jeb221853.
- Swaddle, J. P., M. S. Witter, I. C. Cuthill, A. Budden, and P. McCowen (1996). Plumage condition affects flight performance in common starlings: Implications for developmental homeostasis, abrasion and molt. *Journal of Avian Biology* 27:103–111.
- Swanson, D. L. (1990). Seasonal variation in cold hardiness and peak rates of cold-induced thermogenesis in the dark-eyed Junco (*Junco hyemalis*). *The Auk* 107:561–566.
- Swanson, D. L. (1991). Seasonal adjustments in metabolism and insulation in the dark-eyed Junco. *The Condor* 93:538–556.
- Swanson, D. L. (2010). Seasonal metabolic variation in birds: Functional and mechanistic correlates. *Current Ornithology* 17:75–129.
- Swanson, D. L., M. O. King, W. Culver, and Y. Zhang (2017a). Within-winter flexibility in muscle masses, myostatin, and cellular aerobic metabolic intensity in passerine birds. *Physiological and Biochemical Zoology* 90:210–222.
- Swanson, D. L., A. E. McKechnie, and F. Vézina (2017b). How low can you go? An adaptive energetic framework for interpreting basal metabolic rate variation in endotherms. *Journal of Comparative Physiology B* 187:1039–1056.
- Swanson, D. L., and C. Merkord (2013). Seasonal phenotypic flexibility of flight muscle size in small birds: A comparison of ultrasonography and tissue mass measurements. *Journal of Ornithology* 154:119–127.
- Swanson, D. L., and K. L. Olmstead (1999). Evidence for a proximate influence of winter temperature on metabolism in passerine birds. *Physiological and Biochemical Zoology* 72:566–575.
- Swanson, D. L., Y. Zhang, and A. G. Jimenez (2022). Skeletal muscle and metabolic flexibility in response to changing energy demands in wild birds. *Frontiers in Physiology* 13:961392.
- Tellería, J. L., I. De La Hera, and J. Pérez-Tris (2013). Morphological variation as a tool for monitoring bird populations: A review. *Ardeola* 60:191–224.
- Tellería, J. L., J. Pérez-Tris, and R. Carbonell (2001). Seasonal changes in abundance and flight-related morphology reveal different migration patterns in Iberian forest passerines. *Ardeola* 48:27–46.
- Terrill, S. B., and K. P. Able (1988). Bird migration terminology. *The Auk* 105:205–206.
- Turcotte, M., A. Le Pogam, O. P. Love, and F. Vézina (2025). Data from: Wintering closer to breeding grounds comes at a cost in an Arctic-specialized songbird, *Plectrophenax nivalis* (Snow Bunting). *Ornithology* 143:ukaf038. <https://doi.org/10.5061/dryad.kd51c5bkn> [Dataset].
- Vézina, F., K. M. Jalvingh, A. Dekinga, and T. Piersma (2006a). Acclimation to different thermal conditions in a northerly wintering shorebird is driven by body mass-related changes in organ size. *Journal of Experimental Biology* 209:3141–3154.
- Vézina, F., K. M. Jalvingh, A. Dekinga, and T. Piersma (2006b). Thermogenic side effects to migratory predisposition in shorebirds. *The American Journal of Physiology-Regulatory, Integrative and Comparative Physiology* 292:R1287–R1297.
- Wiersma, P., A. Muñoz-García, A. Walker, and J. B. Williams (2007). Tropical birds have a slow pace of life. *Proceedings of the National Academy of Sciences USA* 104:9340–9345.
- Wiersma, P., and T. Piersma (1994). Effects of microhabitat, flocking, climate and migratory goal on energy expenditure in the annual cycle of Red Knots. *The Condor* 96:257–279.
- Wiklund, C. G. (1996). Body length and wing length provide univariate estimates of overall body size in the Merlin. *The Condor* 98:581–588.
- Williams, J. B., and B. I. Tieleman (2000). Flexibility in basal metabolic rate and evaporative water loss among Hoopoe Larks exposed to different environmental temperatures. *Journal of Experimental Biology* 203:3153–3159.
- Wolak, M. E., D. J. Fairbairn, and Y. R. Paulsen (2012). Guidelines for estimating repeatability. *Methods in Ecology and Evolution* 3:129–137.
- Wu, M., Y. Xiao, F. Yang, L. Zhou, W. Zheng, and J. Liu (2014). Seasonal variation in body mass and energy budget in Chinese Bulbuls (*Pycnonotus sinensis*). *Avian Research* 5:1–10.
- Ydenberg, R. C., G. Fernández, E. Ortiz Lopez, and D. B. Lank (2023). Avian wings can lengthen rather than shorten in response to increased migratory predation danger. *Ecology and Evolution* 13:e10325.
- Zheng, W. H., M. Li, J. S. Liu, and S. L. Shao (2008). Seasonal acclimatization of metabolism in Eurasian Tree Sparrows (*Passer montanus*). *Comparative Biochemistry and Physiology Part A: Molecular & Integrative Physiology* 151:519–525.
- Zheng, W. H., M. Li, J. S. Liu, S. L. Shao, and X. J. Xu (2014). Seasonal variation of metabolic thermogenesis in Eurasian Tree Sparrows (*Passer montanus*) over a latitudinal gradient. *Physiological and Biochemical Zoology* 87:704–718.